

WATTS

REALTY COMPANY

FOR SALE

29.05 +/- Acres Grants Mill Road & Old Leeds Road

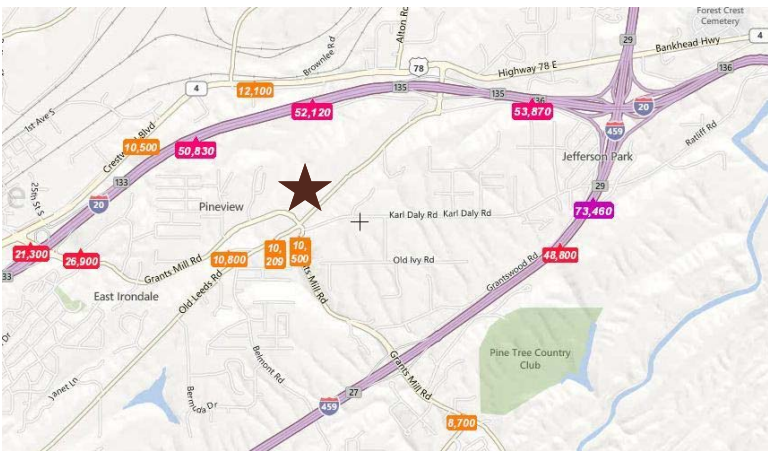
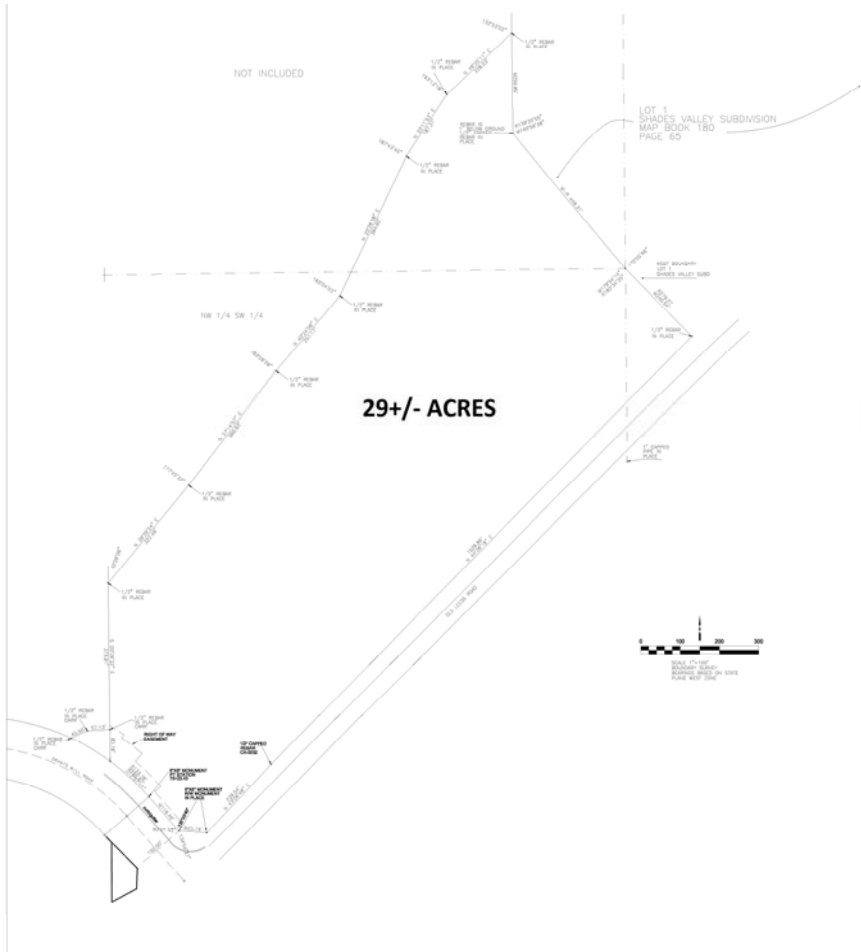
Multiple acres that is great for retail development.

Utilize the approximate 40,000 rooftops within 5 miles to feed the development, including the many new construction homes as well as the Jefferson County High School directly adjacent to the site.

All utilities including sewer are available.

Approximately 2,250 footage of road frontage at the intersection of Old Leeds Road & recently built cut-through of Grants Mill Road. Recent traffic counts at over 10,000 cars per a day.

The 2010 average household income within just one mile was \$81,073.



<i>ZONED</i>	A-1 Agricultural
<i>Property Size</i>	29.05 +/- Acres
<i>Listing Price</i>	NEGOTIABLE

OFFERED SUBJECT TO PRIOR SALE, CHANGE IN PRICE OR WITHDRAWAL FROM THE MARKET WITHOUT NOTICE
The information transmitted herewith was furnished to Watts Realty Co., Inc. and Watts Realty Co., Inc. does not warrant the accuracy thereof.